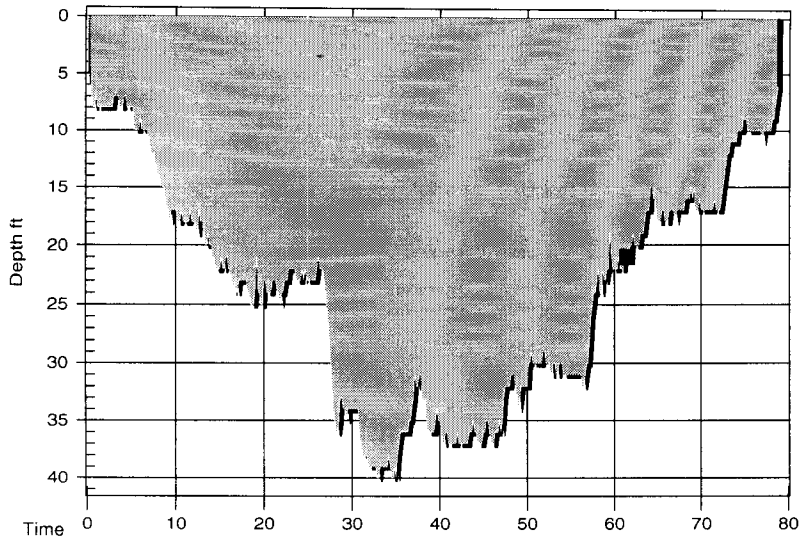


## Dive Profile for Dan Yuchnovicz

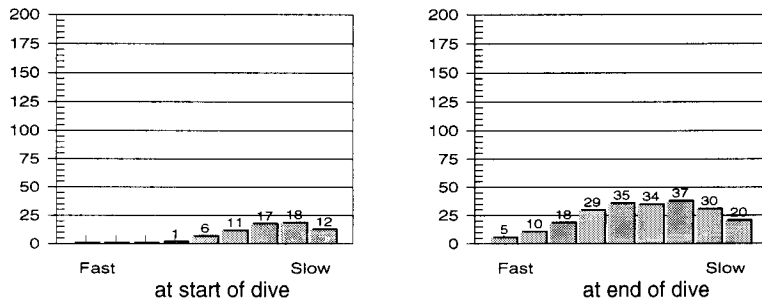


<b>Dive No. 445</b>	<b>11/19/2003</b>
Bonaire, N.A.	
Invisibles	

### Information from dive computer

Max Depth	<b>40 ft</b>
Dive Time	<b>78:50</b>
Date of Dive	<b>11/19/2003</b>
Start Time	<b>4:37 PM</b>
End Time	<b>5:55 PM</b>
DC Dive no.	<b>3</b>
Surface Interval	<b>2:53</b>
Altitude Mode	<b>A0</b>
Personal Setting	<b>P0</b>
ID no.	<b>234451</b>
Personal Info	<b>Dan Yuchnovicz</b>
Model	<b>Vytec</b>
Sampling Rate	<b>10</b>
Alarms Recorded	

### Tissue saturation percentages



Oxygen Percent	<b>34 %</b>
OLF	<b>14 % CNS</b>

### Other Information

Partner	<b>Michelle Y</b>		
Dive Master			
Dive Boat			
Weather	<b>Partly Sunny</b>		
Visibility	<b>100 ft</b>		
Weight Used	<b>12 lbs</b>		
Air Temp.	<b>86 ° F</b>		
Water Temp., Max Depth	<b>82 ° F</b>	End of dive	<b>82 ° F</b>
Dive Category	<b>Reef Dive</b>		
Dive Environment	<b>Salt Water - Day</b>		
Type of Entry	<b>Shore Dive</b>		
Surface Conditions	<b>1 ft&lt; with surge</b>		
Current Conditions	<b>No Current</b>		
Dive Gear			

<input type="checkbox"/>	Dive manually added
<input type="checkbox"/>	Dive modified
<input type="checkbox"/>	Tissue pressures invalid
Cylinder Size	<b>120.0 cu ft</b>
Working Pressure	<b>3500 psi</b>
Cylinder Pressure	
Start	<b>2810 psi</b>
End	<b>510 psi</b>

### Information Computed by logbook

Average Depth	<b>24 ft</b>
Surface Air Consumption	<b>0.53 SCFM</b>
Air Used	
Standard Volume	<b>78.9 cu ft</b>
Pressure	<b>2300 psi</b>
Pressure per min.	<b>29 psi</b>

Notes **Great Dive. Saw a frog fish and shot video while Michelle shot still pictures. A long dive!**